

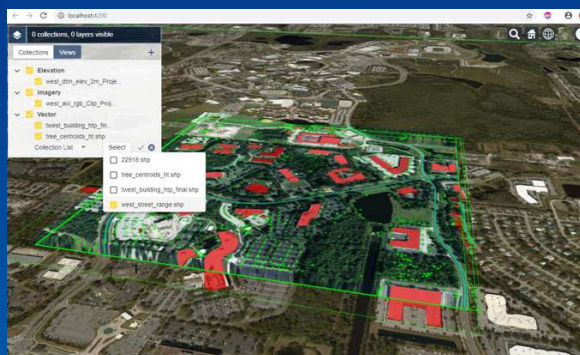
ASSIMILATION OF SOURCES FOR A COHESIVE ENVIRONMENT DESCRIPTION (ASCEND™)



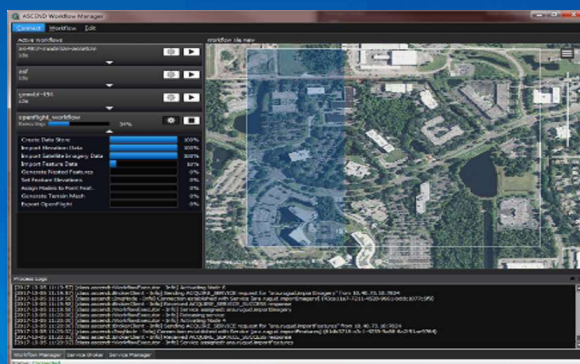
- **WEB-BASED 3D WORLD GENERATION**
- **FULL PIPELINE SUPPORT, FROM DRONE, AIRCRAFT, OR SATELLITE TO 3D DATA**
- **IMPORT ALL STANDARD GEOSPATIAL SOURCES**
- **SERVICE-ORIENTED ARCHITECTURE IN THE CLOUD**
- **EXPORT 3D DATABASES TO GAME ENGINES AND WEB-BASED INTERFACES**

QUICKLY DELIVER ENVIRONMENT DATA TO SOLDIERS

Our Assimilation of Sources for a Cohesive Environment Description (ASCEND™) software streamlines the source-to-Soldier data pipeline. ASCEND provides tools and standards that work together to quickly funnel to the Soldier only the most useful synthetic environment (SE) data. This data, pulled from the military's powerful data-collection tools, can feed new or existing training systems or Soldiers in the field. Our goal is to help Soldiers and mission planners act quickly and make informed decisions, improving their chance of mission success.



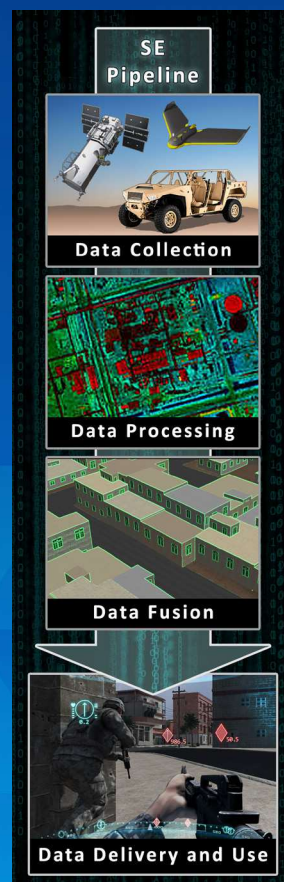
ASCEND'S WEB APPLICATION USER INTERFACE



ASCEND'S DESKTOP USER INTERFACE

ASCEND has been deployed to the GovCloud at different classification levels and is scalable to many simultaneous users and huge data sizes.

SYNTHETIC ENVIRONMENT PIPELINE



ARA synthetic environment technologies provide military trainers and mission planners accurate 3D worlds in which to train, rehearse, and execute in minutes, a process that used to take several months.

ASSIMILATION OF SOURCES FOR A COHESIVE ENVIRONMENT DESCRIPTION (ASCEND™)

Jeff Lyons • 689.216.3016 • jlyons@ara.com

Brian Olive • 689.216.3029 • bolive@ara.com



Applied Research Associates, Inc. (ARA) was founded in 1979, in Albuquerque, New Mexico, to offer science and engineering research to solve problems of national importance. ARA delivers leading-edge products and solutions for national defense, homeland security, aerospace, healthcare, transportation, and manufacturing. With over 1,700 employee-owners at locations in the U.S. and Canada, ARA offers a broad range of technical expertise in defense technologies, civil engineering, computer software and simulation, systems analysis, biomedical engineering, environmental technologies, and blast testing and measurement.

www.ara.com
Applied Research Associates, Inc.

